

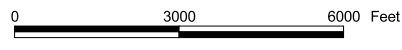
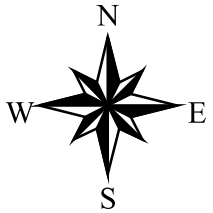
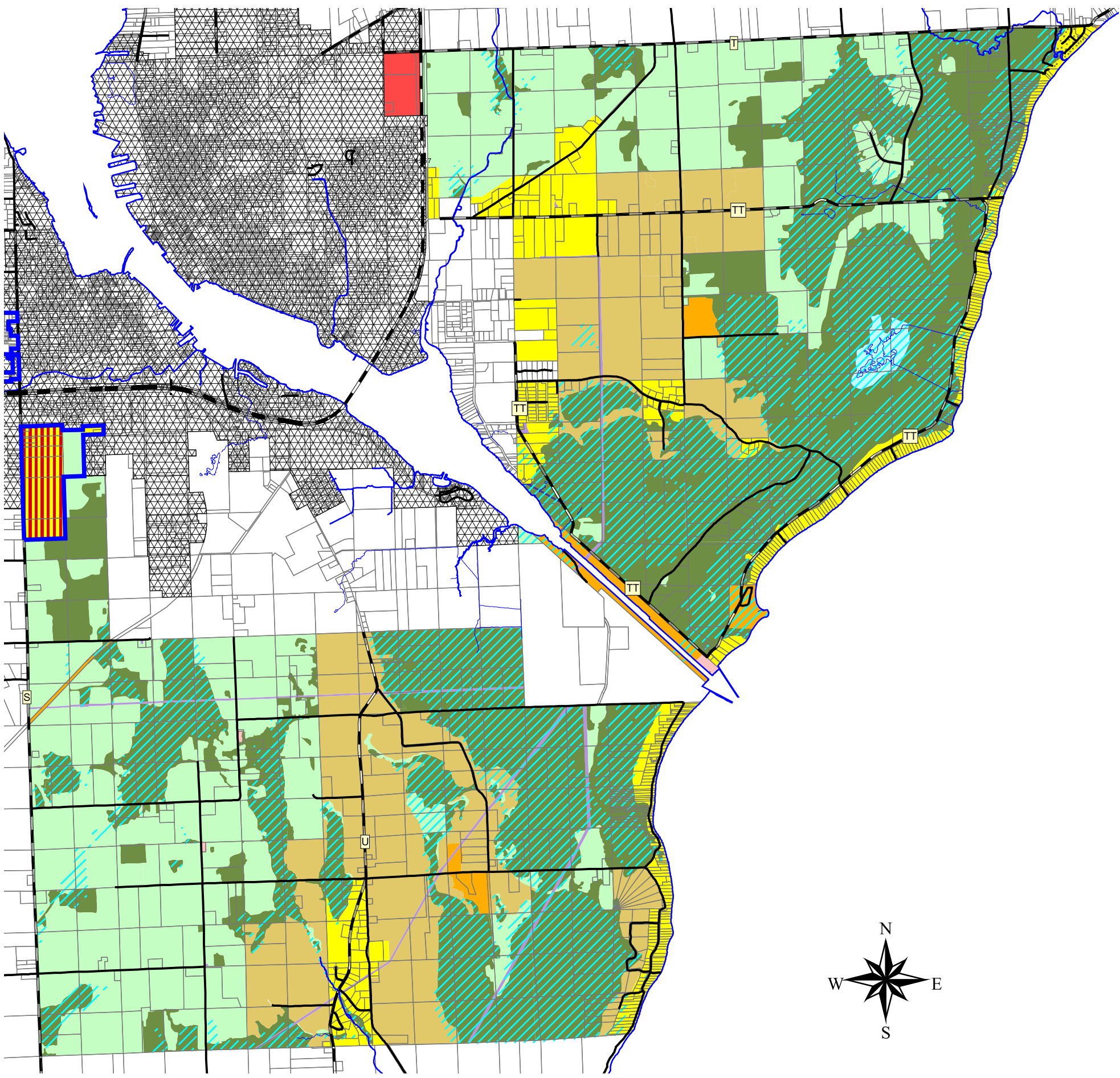


Door County Planning Dept.  
 421 Nebraska Street  
 Sturgeon Bay, WI 54235  
 (920) 746-2323  
 map.co.door.wi.us/planning

# Door County Comprehensive and Farmland Preservation Plan 2035

## Town of Sturgeon Bay Future Land Use

Adopted by the Door County Board of Supervisors, December 16, 2014  
 Effective upon distribution per Wisconsin State Statutes, January 1, 2015



Future Land Use Categories			
	Residential		Communications/Utilities
	Rural Residential		Governmental/Institutional
	Mixed Commercial/Residential		Parks and Recreation
	Commercial		Rural/Agricultural
	Industrial		Woodland/Wetland/Natural
	Transportation		Core Area
	Sewer Service Area		Environmental Corridor
	Water Bodies	<b>Road Class</b>	
	Major Wetland Areas		State Highway
	Streams		County Highway
			Local Road