



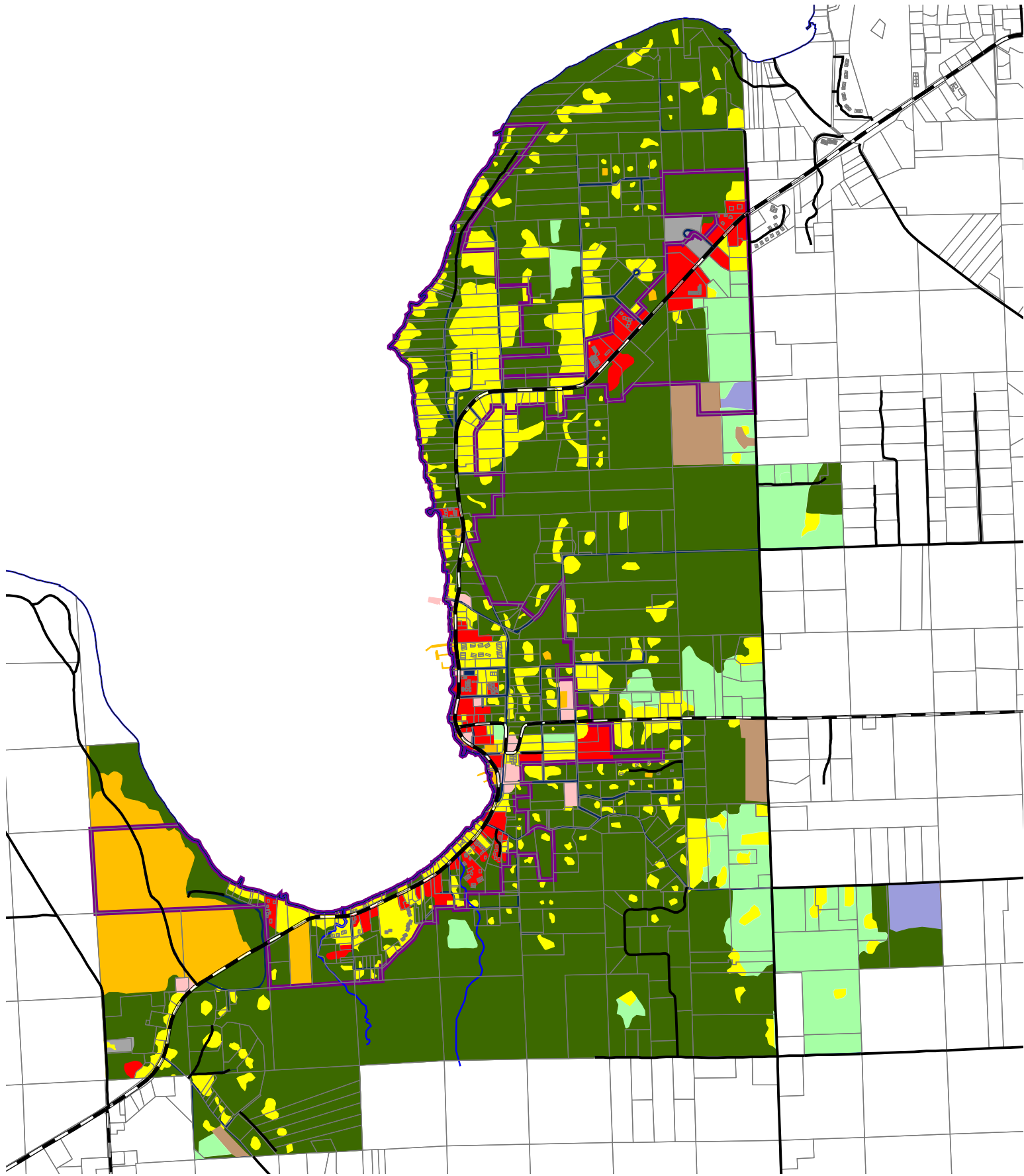
Door County Planning Dept.
421 Nebraska Street
Sturgeon Bay, WI 54235
(920) 746-2323
map.co.door.wi.us/planning

Door County Comprehensive and Farmland Preservation Plan 2035

Village of Ephraim

2014 Land Use

Adopted by the Door County Board of Supervisors, December 16, 2014
Effective upon distribution per Wisconsin State Statutes, January 1, 2015



Land Use Categories	
	Residential
	Commercial
	Industrial
	Transportation
	Communications/Utilities
	Governmental/Institutional
	Parks and Recreation
	Open Space/Fallow Fields
	Agricultural
	Woodlands, Wetlands, Natural Areas

Road Class	
	State Highway
	County Highway
	Local Road

	Public Sewer Service Areas
	Water Bodies
	Streams

