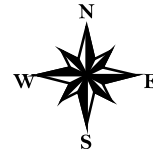
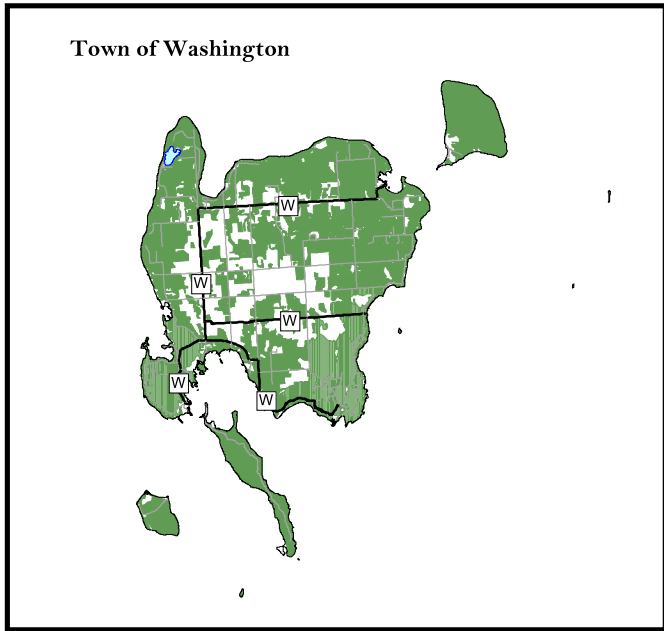




Door County Planning Dept.  
421 Nebraska Street  
Sturgeon Bay, WI 54235  
(920) 746-2323  
map.co.door.wi.us/planning

# Door County Comprehensive and Farmland Preservation Plan 2035

## Map 6.7: Woodlands



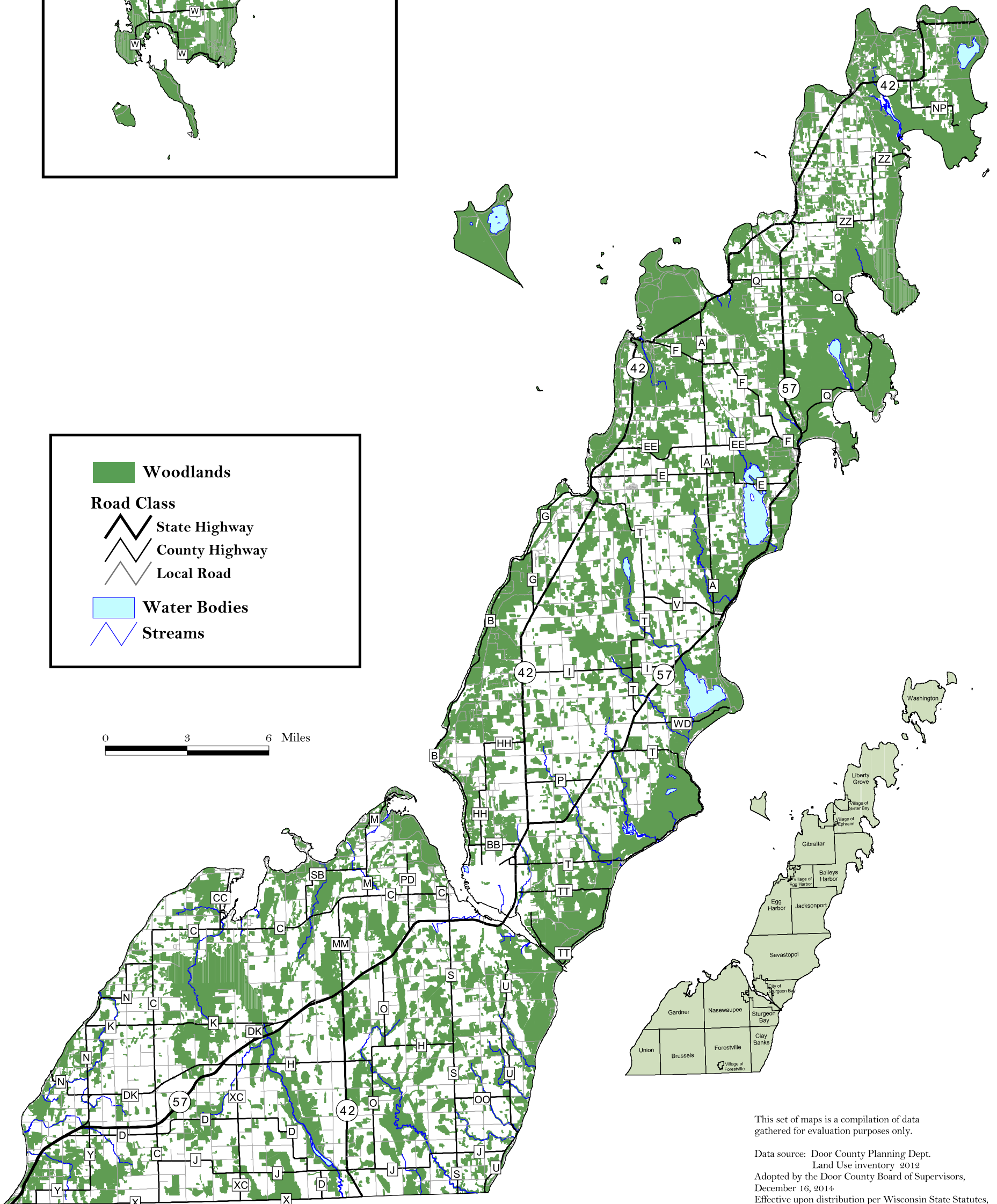
See Town of Washington Inset

**Woodlands**

**Road Class**

- State Highway
- County Highway
- Local Road
- Water Bodies
- Streams

0 3 6 Miles



This set of maps is a compilation of data gathered for evaluation purposes only.

Data source: Door County Planning Dept.  
Land Use inventory 2012  
Adopted by the Door County Board of Supervisors,  
December 16, 2014  
Effective upon distribution per Wisconsin State Statutes,  
January 1, 2015