



Door County Planning Dept.
421 Nebraska Street
Sturgeon Bay, WI 54235
(920) 746-2323
map.co.door.wi.us/planning

Door County Comprehensive and Farmland Preservation Plan 2035

Map 9.1(C): Future Land Use Northern Municipalities

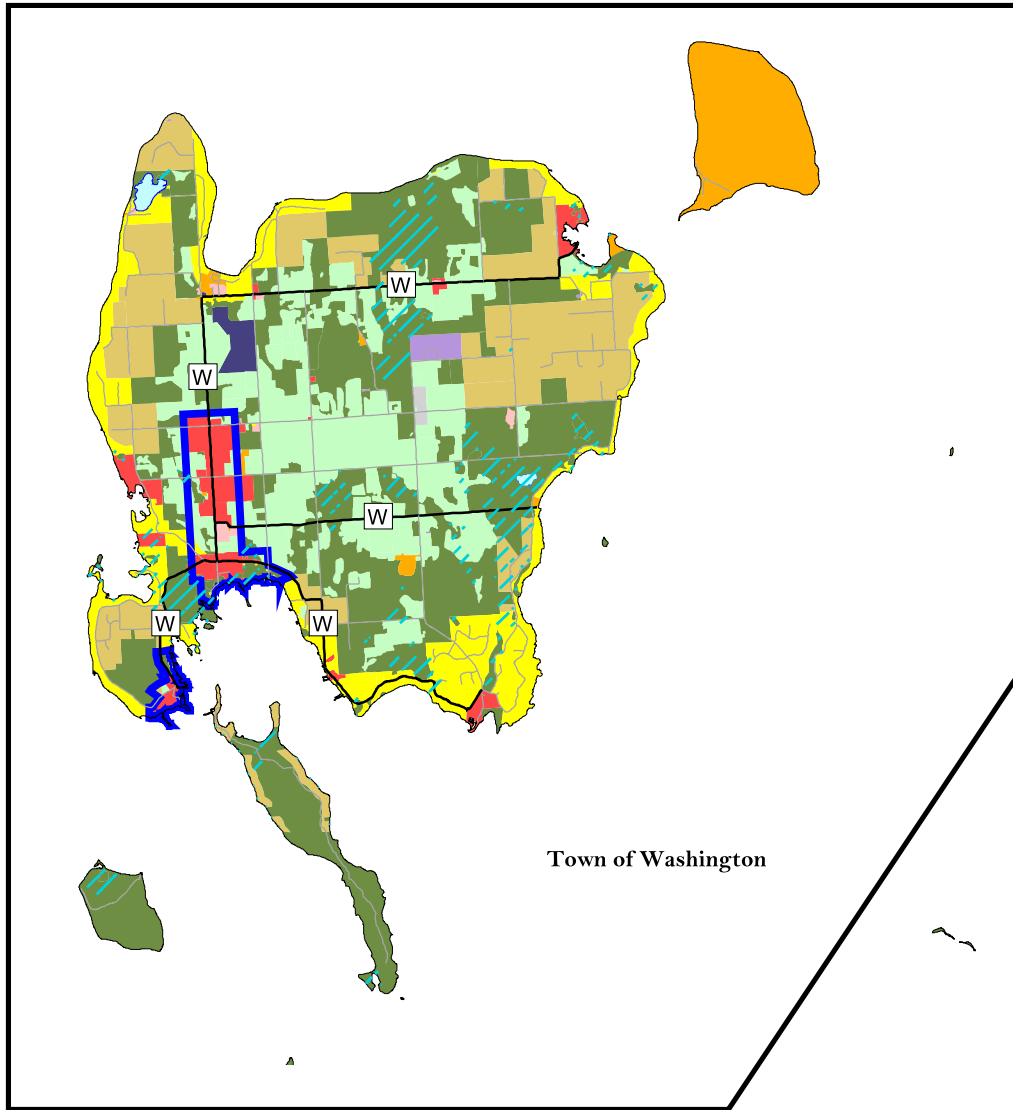
This set of maps is a compilation of data gathered for evaluation purposes only.

Adopted by the Door County Board of Supervisors, December 16, 2014
Effective upon distribution per Wisconsin State Statutes, January 1, 2015

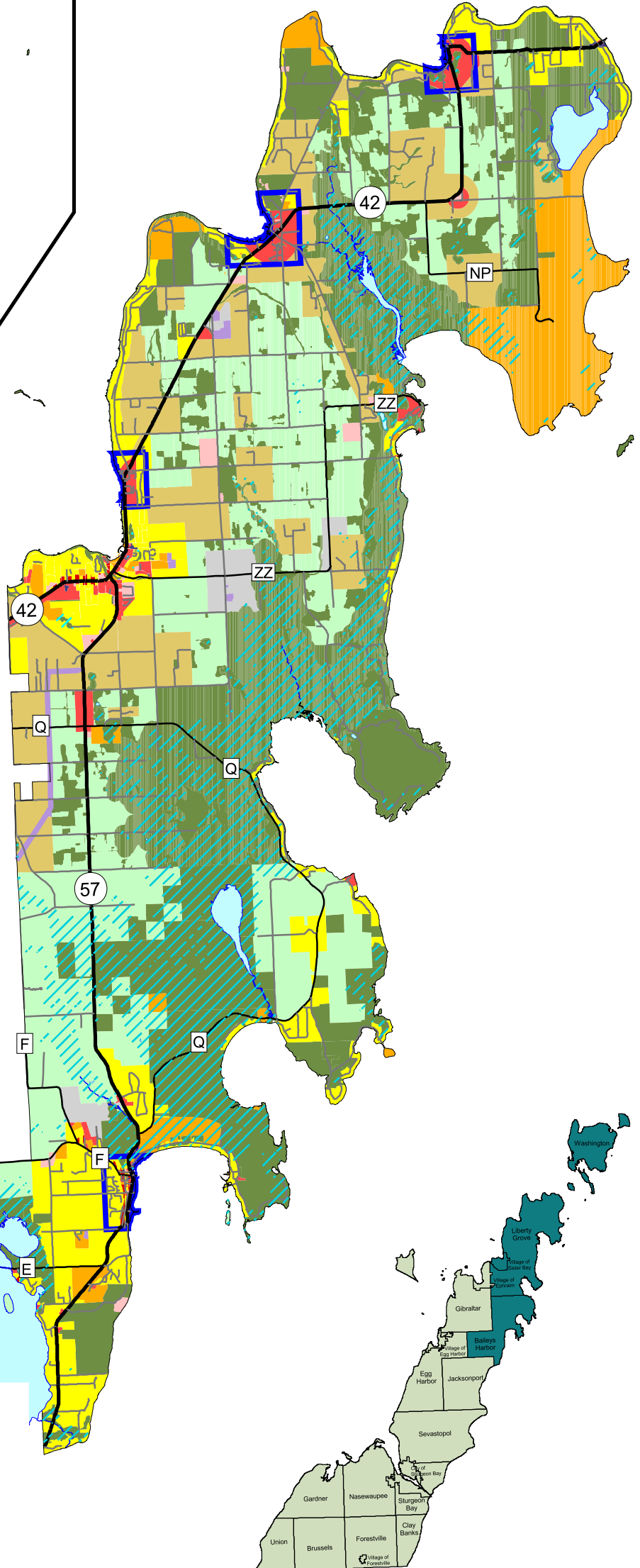
NOTE: Larger-scale land use maps, including wetlands, may be viewed at:

map.co.door.wi.us/planning
or
Door County Planning Department
421 Nebraska Street
Sturgeon Bay, WI 54235

See Town of Washington Inset



Town of Washington



See Map 9.1(B)

Future Land Use Categories

- Residential
- Rural Residential
- Mixed Commercial/Residential
- Commercial
- Industrial
- Transportation
- Communications/Utilities
- Governmental/Institutional
- Parks and Recreation
- Rural/Agricultural
- Woodland/Wetland/Natural
- Core Areas

Road Class

- State Highway
- County Highway
- Local Road

Water Bodies

Major Wetland Areas

Streams

