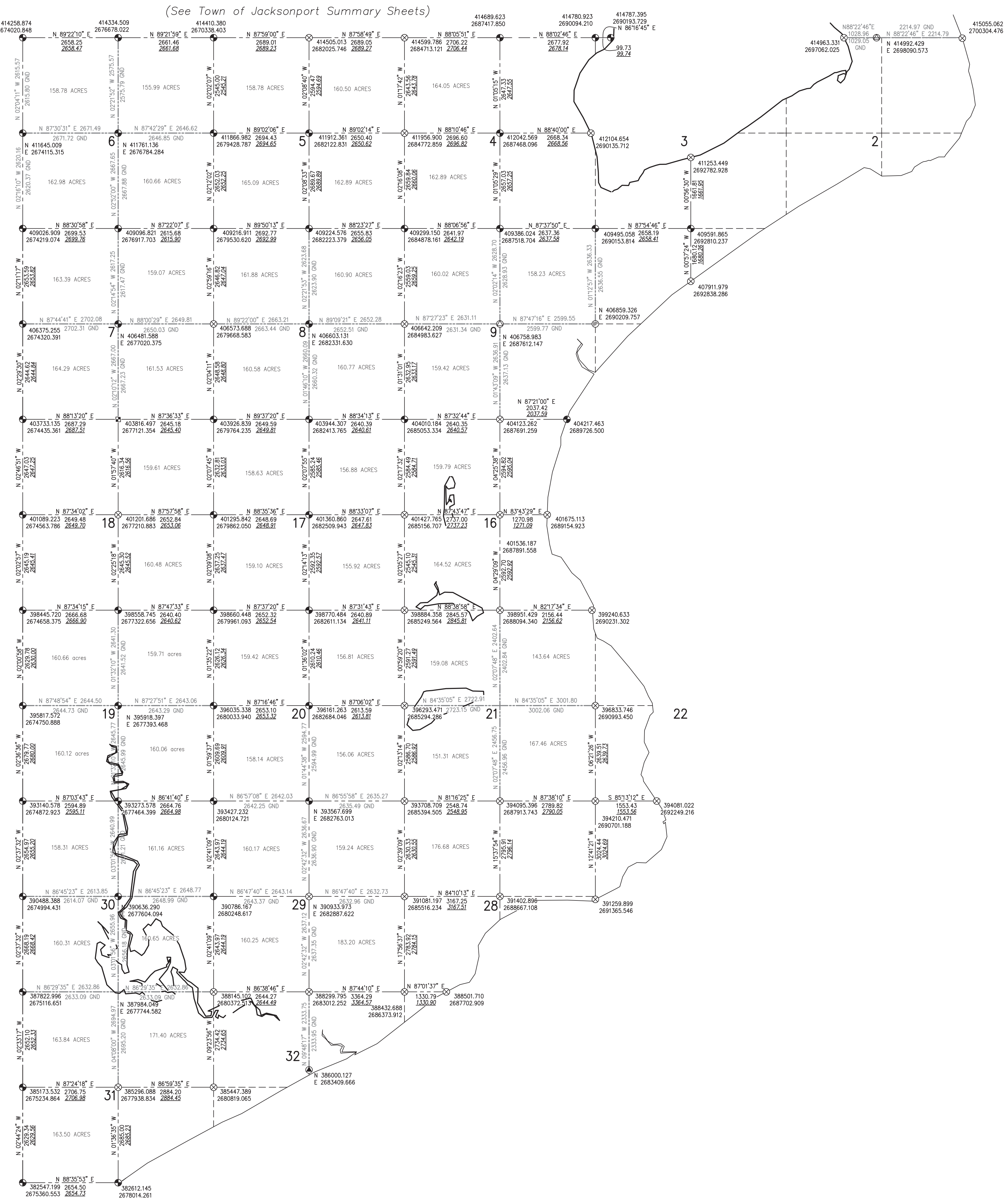


(See Western part of the Town of Sevastopol Summary Sheet)



CONTROL SURVEY SUMMARY DIAGRAM FOR TOWN OF SEVASTOPOL

TOWN OF SEVASTOPOL  
TOWN 28 NORTH - RANGE 27 EAST  
DOOR COUNTY, WISCONSIN

- U.S. PUBLIC LAND SURVEY CORNER MARKED BY 4" ALUMINUM CAP - DOOR COUNTY MONUMENT
- ⊗ U.S. PUBLIC LAND SURVEY CORNER (SUSPECT USING GPS AND CONVENTIONAL METHODS)
- ▲ U.S. PUBLIC LAND SURVEY CORNER (SUSPECT USING GPS AND CONVENTIONAL METHODS)
- ⊙ U.S. PUBLIC LAND SURVEY CORNER, REBAR
- ⊕ U.S. PUBLIC LAND SURVEY CORNER, IRON PIPE
- ⊖ U.S. PUBLIC LAND SURVEY CORNER MARKED BY 3" MAG SPIKE - DOOR COUNTY MONUMENT

DRAWN BY: P. A. SPEITZ	DATE: FEB. 2001
CHECKED BY: M. G. MC CARTY	DATE: FEB. 2001
APPROVED BY: J. S. BAUDHUN	DATE: FEB. 2001
REVISED: M. G. MC CARTY	DATE: 6-01/8-14/1-18
REVISED:	DATE:

DOOR COUNTY'S CONTINUING ALL INFORMATION NECESSARY FOR RECOVERY AND USE OF CONTROL SURVEY STATIONS AVAILABLE FROM DOOR COUNTY.

HORIZONTAL DATUM IS BASED ON THE WISCONSIN STATE PLANE COORDINATE SYSTEM GRID, CENTRAL ZONE, AND ALL BEARINGS ARE REFERRED TO GRID NORTH.

DIMENSIONS SHOWN IN ITALICS AND UNDERLINED INDICATE GROUND LEVEL DISTANCES

GROUND LEVEL DISTANCES ARE SCALED USING THE AVERAGE COMBINATION FACTOR FOR EACH LINE

U.S. PUBLIC LAND SURVEY CORNER MARKED BY 4" ALUMINUM CAP - DOOR COUNTY MONUMENT

U.S. PUBLIC LAND SURVEY CORNER (SUSPECT USING GPS AND CONVENTIONAL METHODS)

U.S. PUBLIC LAND SURVEY CORNER, REBAR

U.S. PUBLIC LAND SURVEY CORNER, IRON PIPE

U.S. PUBLIC LAND SURVEY CORNER MARKED BY 3" MAG SPIKE - DOOR COUNTY MONUMENT