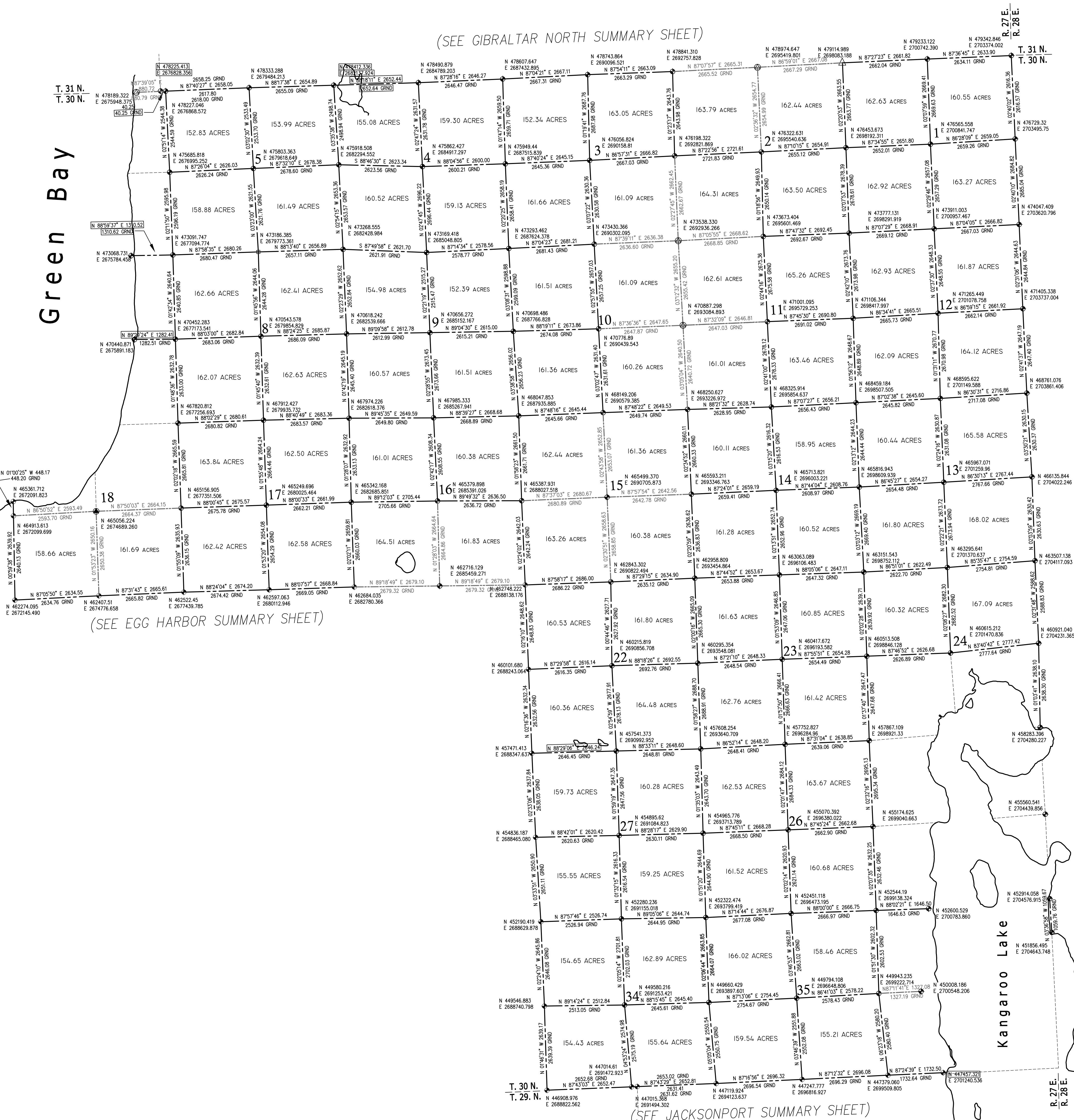


(SEE GIBRALTAR NORTH SUMMARY SHEET)

Green Bay



(SEE EGG HARBOR SUMMARY SHEET)

(SEE JACKSONPORT SUMMARY SHEET)

- ◆ U.S. PUBLIC LAND SURVEY CORNER MARKED BY BERTSEN ALUMINUM MONUMENT WITH 4" ALUMINUM CAP - DOOR COUNTY MONUMENT
- U.S. PUBLIC LAND SURVEY CORNER - STONE MONUMENT
- ⊙ U.S. PUBLIC LAND SURVEY CORNER, IRON ROD
- ⊙ U.S. PUBLIC LAND SURVEY CORNER, IRON PIPE
- U.S. PUBLIC LAND SURVEY CORNER MARKED W/ 2" ALUMINUM MONUMENT
- ⊙ U.S. PUBLIC LAND SURVEY CORNER MARKED BY 3" MAG SPIKE DOOR COUNTY MONUMENT

HORIZONTAL DATUM IS BASED ON THE WISCONSIN STATE PLANE COORDINATE SYSTEM GRID, CENTRAL ZONE, AND ALL BEARINGS ARE REFERRED TO GRID NORTH -

DIMENSIONS SHOWN ARE GEODETIC (GRD) DISTANCES FOLLOWED BY "GRND" INDICATE GROUND LEVEL DISTANCES

GROUND LEVEL DISTANCES ARE SCALED USING THE AVERAGE COMBINATION FACTOR FOR EACH LINE

CONTROL SURVEY SUMMARY DIAGRAM
FOR
TOWN OF GIBRALTAR (SOUTH)
TOWN 30 NORTH - RANGE 27 EAST
DOOR COUNTY, WISCONSIN

DRAWN BY: P. A. SPETZ	DATE: MAR. 2002
CHECKED BY: M. G. MC CARTY	DATE: MAR. 2002
APPROVED BY: J. S. BAUDHUIJN	DATE: MAR. 2002
REVISED: M. G. MC CARTY	DATE: JAN 2018
REVISED:	DATE:

DOSSER SHEETS CONTAINING ALL INFORMATION NECESSARY FOR RECOVERY AND USE OF CONTROL SURVEY STATIONS AVAILABLE FROM DOOR COUNTY.