

DOOR COUNTY FACILITIES & PARKS PUBLIC TOURS OF HORSESHOE BAY CAVE



August 7, 2021 ~ Saturday

9:00 a.m. — 3:00 p.m.

Tour Details

- Tours are Staff or Trustee Led
- Tours will include a brief educational presentation at the start and a question and answer session at the end of the tour.
- Duration: 45 minutes to 1 hour
- Distance: Management Zone 1 and (Conditions Permitting) part of Management Zone 2. (See map below)
- Difficulty: Easy to moderate. Bending and crawling are required. Uneven surfaces, but no vertical climbs or drops.
- Tours Departures: On the hour, commencing at 9:00 a.m. with the last tour departing at 3:00 p.m. Tour participants should arrive 30 minutes before the scheduled departure time.
- Tour Group Sizes: Limited to twelve person, including staff and/or trustees

Reservations

Reservations are not required, but are recommended to ensure a spot on cave tours. Reservations cannot be made the same day of the tour. You may make reservations by visiting, calling or emailing the Door County Facilities & Parks Department at 421 Nebraska Street, Sturgeon Bay WI 54235; (920) 746-7130; Email address: dcparks@co.door.wi.us. Office hours are Monday — Friday from 8:00 a.m.—4:30 p.m.

Absent reservations, tours may be available on a first-come-first-served basis.

Any youth under the age of 16 must be accompanied by an adult 18 years or older, on the tours. One adult may accompany more than one youth if authorized in writing by youth's parent/guardian.

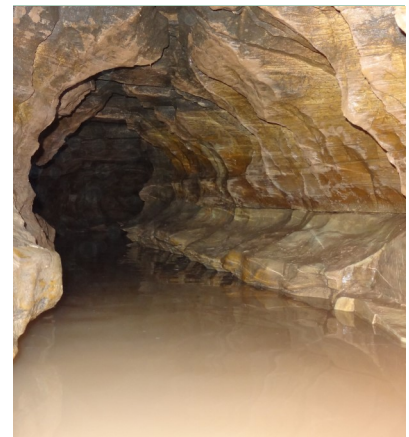
DIRECTIONS:

***Across the road
(and through the field)
from***

***FRANK E. MURPHY
COUNTY PARK 7119***

***Bay Shore Drive,
Egg Harbor WI 54209.***

Follow the signs.



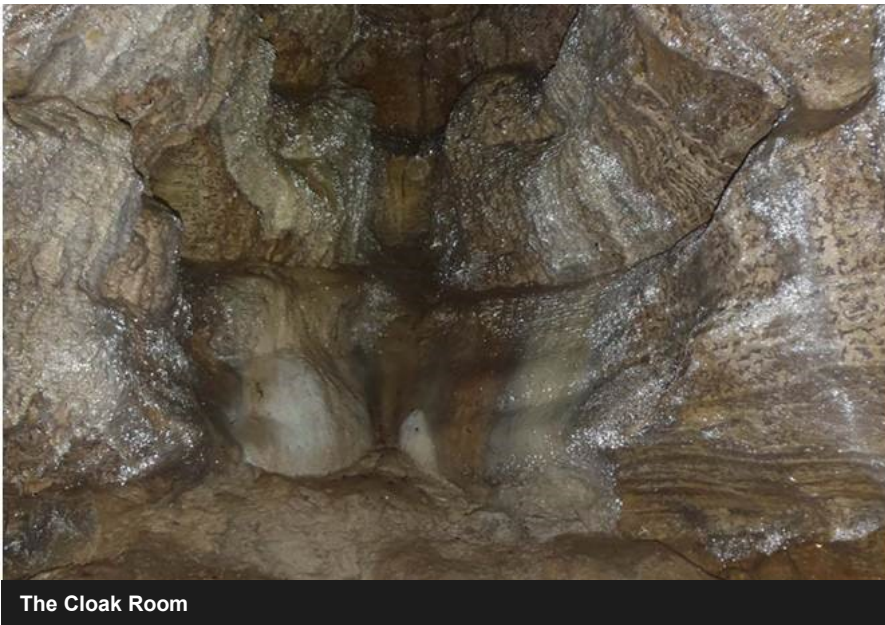
Cave passage during high water

**Door County
Facilities &
Parks**

421 Nebraska Street
Sturgeon Bay WI 54235
(920) 746-9959

Website: www.co.door.wi.gov

Door County Parks link: www.co.door.wi.gov/469/Door-County-Parks



The Cloak Room

Amenities:

Portable toilet on site and restrooms also available at Frank E. Murphy County Park, 7119 Bay Shore Drive, Egg Harbor, WI 54209. Follow the signs.

Accessibility:

None.

Recommended Clothing

The cave is wet (some puddles of standing water possible) and muddy, and cave temperatures are usually as cool as a fall day (50 degrees). Long sleeve shirt, jeans and good walking shoes are recommended.

Early Exit

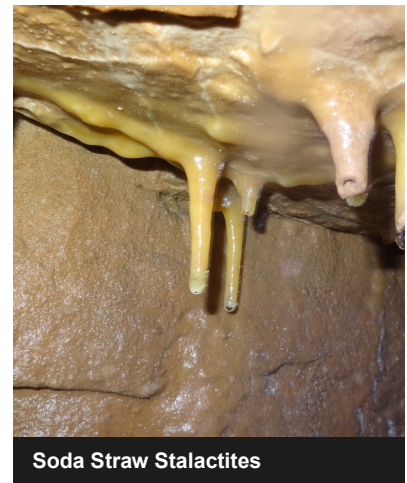
Circumstances may arise where individual(s) may wish to leave the tour early. If such circumstances arise, the individual(s) will be carefully escorted from the cave.

Notice:

Facility & Parks will provide helmets and lights, knee pads, gloves and rubber boots. No personal caving (or other) equipment allowed (except cameras as noted below). No Exceptions.

Any clothing or equipment worn in HSB on the tour should not be worn in other caves or mines in order to prevent the risk of human-assisted transmission of White Nose Syndrome.

Cameras are, at the discretion of staff or trustee, permissible. Camera stands (tripods) are not allowed. Cameras must be decontaminated (Lysol wipes will be provided for this purpose) before entering the cave and immediately after exiting the cave.) Note that cameras may get wet/dirty/sandy.



Soda Straw Stalactites